



# "TUILES"

Humour show and object manipulation

**New Circus**

**Cie FRED TEPPE**

Creator and performer:

# Fred Teppe

Contact: Marie Mellinger - [www.fredteppe.com](http://www.fredteppe.com) - [contact@fredteppe.com](mailto:contact@fredteppe.com) - 00 33 (0)6 75 21 95 08

## Presentation



Burlesque juggling solo by Fred Teppe in Jacques Tati's spirit.

He creates a quirky and poetic universe in which he manipulates everyday objects whose original function is diverted.

A magic stool on which balls are bouncing before they disappear. An airer rebels itself to become a disarticulated bird. Crisps boxes filled with improbability.

Incorrigible gourmand, and true Crisps'opath, he devours, all through the show, his crisps by the box.

This tender and naive character tries his best to "look good" in this universe worthy of Pierre Etaix's best movies.

**It is possible to present several versions of this show, according to technical conditions, budget and the audience.**

Minimum dimensions are: Height: 2.5m, Opening: 4m, Depth: 4m. Refer to technical datasheets further on.

Logistics: 1 to 2 people travelling from Nancy.

Possibility to organise meetings with the audience.

You can find all clarifications, images and videos at:  
[www.fredteppe.com](http://www.fredteppe.com)

Contact: Marie Mellinger - [www.fredteppe.com](http://www.fredteppe.com) - [contact@fredteppe.com](mailto:contact@fredteppe.com) - 00 33 (0)6 75 21 95 08

### The "TUILES" team



#### **Fred Teppe: *Creator and Performer***

Object manipulator and creator of visual shows for 20 years, he has split his professional life between France and Morocco.

Artistic director of the "Haraka Daima" company in Rabat. Creator and performer of the solo "Rebond". Creator and performer of the spectacle "Perpetuum Mobile" in partnership with Biarritz-Culture and the DRAC Pyrénées-Atlantique. Has played in France, Spain, Germany and Morocco. His shows are structured around juggling, object manipulation and mechanical items.



#### **Florent Chartier: *Lightning and Sound Director***

General coordinator of the "TUILES" show.

06.70.43.35.87

[florent.chartier@gmail.com](mailto:florent.chartier@gmail.com)



#### **Jean-Pierre Legout: *Lightning Creation***

Lightning creator for the theatre company "La Lune à l'Âme" and "Marilis Orionaa". Lightning creator for the shows "M'aime pas" and "TUBES" for the company "Mauvais Esprits" for which he also acts as director.

Lightning designer for the contemporary dance festival "Plurielles" of the Saragosse Theatre in Pau.

He is technical consultant for the new hall of the Maputo (Mozambique) cultural centre.



**Elsa Rose : Costume Designer**

Clothing creator, but also costume designer, she collaborates with different companies for the creation of stage outfits.  
Graduate in Fashion design and "Couture flou" formation.



**Marie Mellinger : In Charge with production**

[contact@fredteppe.com](mailto:contact@fredteppe.com)

00 33 (0)6 75 21 95 08

Contact: Marie Mellinger - [www.fredteppe.com](http://www.fredteppe.com) - [contact@fredteppe.com](mailto:contact@fredteppe.com) - 00 33 (0)6 75 21 95 08

**Fees and Conditions**



Fees depend on the number of performances, on technical conditions, on the proximity of the performance site and on the length of the show. The different versions of the show are described hereafter.

On our tours abroad, artists make themselves available for meetings with the media, after show debates, meetings with local associations, scholar interventions, etc.

For a precise estimate, contact Marie Mellinger - [contact@fredteppe.com](mailto:contact@fredteppe.com)  
06 75 21 95 08

"TUILES": several versions existing.

V1 - several extracts from 5 to 15 minutes, for cabarets, animated evenings and street shows.

V2 - from 30 to 45 minutes, meant for sites of modest technicality, or "young age" programming.

Versions 1 and 2 can be performed outside or with spotlights.

V3 - 65 minutes for the complete version, in theatres or circus tents respecting the complete technical datasheet.

Contact: Marie Mellinger - [www.fredteppe.com](http://www.fredteppe.com) - [contact@fredteppe.com](mailto:contact@fredteppe.com) - 00 33 (0)6 75 21 95 08

# "TUILES"

## Complete technical datasheet

### (Equipped hall)

(TD for outside and spotlights on third page)

#### Presentation:

- Duration: 1 hour (for all ages) / 45 minutes (scholar groups)
- Audience: all ages above 7
- Mounting time: two 4-hours service with one technician in the hall.
- Dismounting time: 1 hour
- In the absence of an already existing lightning equipment, extra time is needed (depending on the fixation system).

The scenery is composed of a 2 m high x 0.60 m large box, and of a far-off table, the rest of the stage being occupied with diverse props (folding stools, hanger, ainer...) and juggling objects (balls, cylindrical boxes...).

#### Set:

- The ideal dimensions, 7m x 7m, can be adapted to various types of halls. The study of the welcoming site's technical datasheet will allow to define the feasibility of the adaptation.
- The adaptation remains possible with a 4m depth, a 4m opening and a 4m height beneath perches.
- The floor must be as black as possible (flooring, dance mats, etc) with a maximum 1% slope. In the case of abroad performances, the welcoming site must provide two medium planks painted black, dimensions: 200 cm x 100 cm x 4 cm (more than 4 cm) and 200 cm x 60 cm x 2 cm.

### **Lightning:**

- 15 PC 1kw
- 8 PAR CP62
- 6 profile lamps 614SX (or counterpart)
- 2 stands, each for a profile lamp, of approximate height 1.50 m
- 24 dimmers of 2kw
- 1 memory desk with records
- Stage lightning commanded from the board, and dimmable.

According to the dimensions and the available equipment, the projectors and props' list can be adapted. The company can provide the gelatin.

### **Sound:**

- 1 CD player with an automatic pause
- 1 console with 2 inputs, 2 auxiliaries (post faders) and 1 stereo output
- 1 facade adapted to the hall
- 1 stereo system for a sound feedback at the front of the stage (left and right)
- 1 ambiance micro

### **Else:**

- Dressing rooms (ready before our arrival): individual, can be locked with a key, less than 20m away from the stage, with: a table, a mirror, a lamp, two chairs, a towel and soap, and an iron.
- 3 liters of drinkable water and snack for 2 people per performance.

### **Progress and team:**

- Depending on the dwelling time, we can arrive on the morning of the performance day, or in the evening of the day before.

- Technical personel for the day: one general operator of the place.

- Schedule:

15 h 00 - 18 h 00: technical installation

18 h 00 - 18 h 30: cleaning of the stage

18 h 30 - 20 h 15: on stage, show run-through before the performance

20 h 30 - 21h30: performance

21 h 30: 1 hour to dismount

These hours act as examples, and will change according to the time and place of the show.

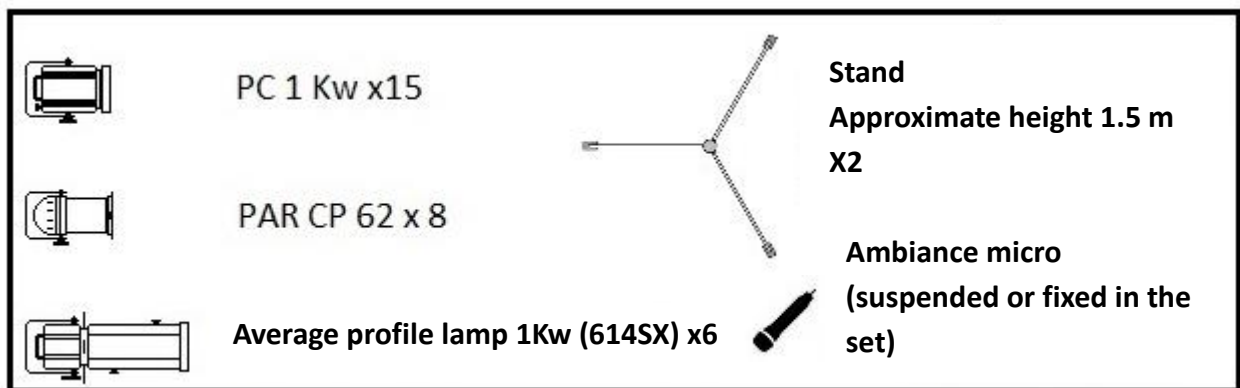
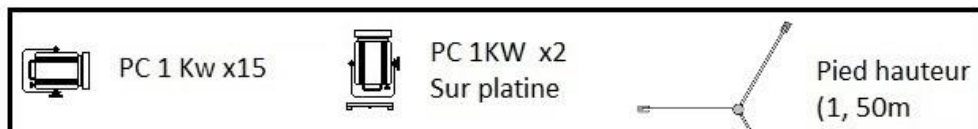
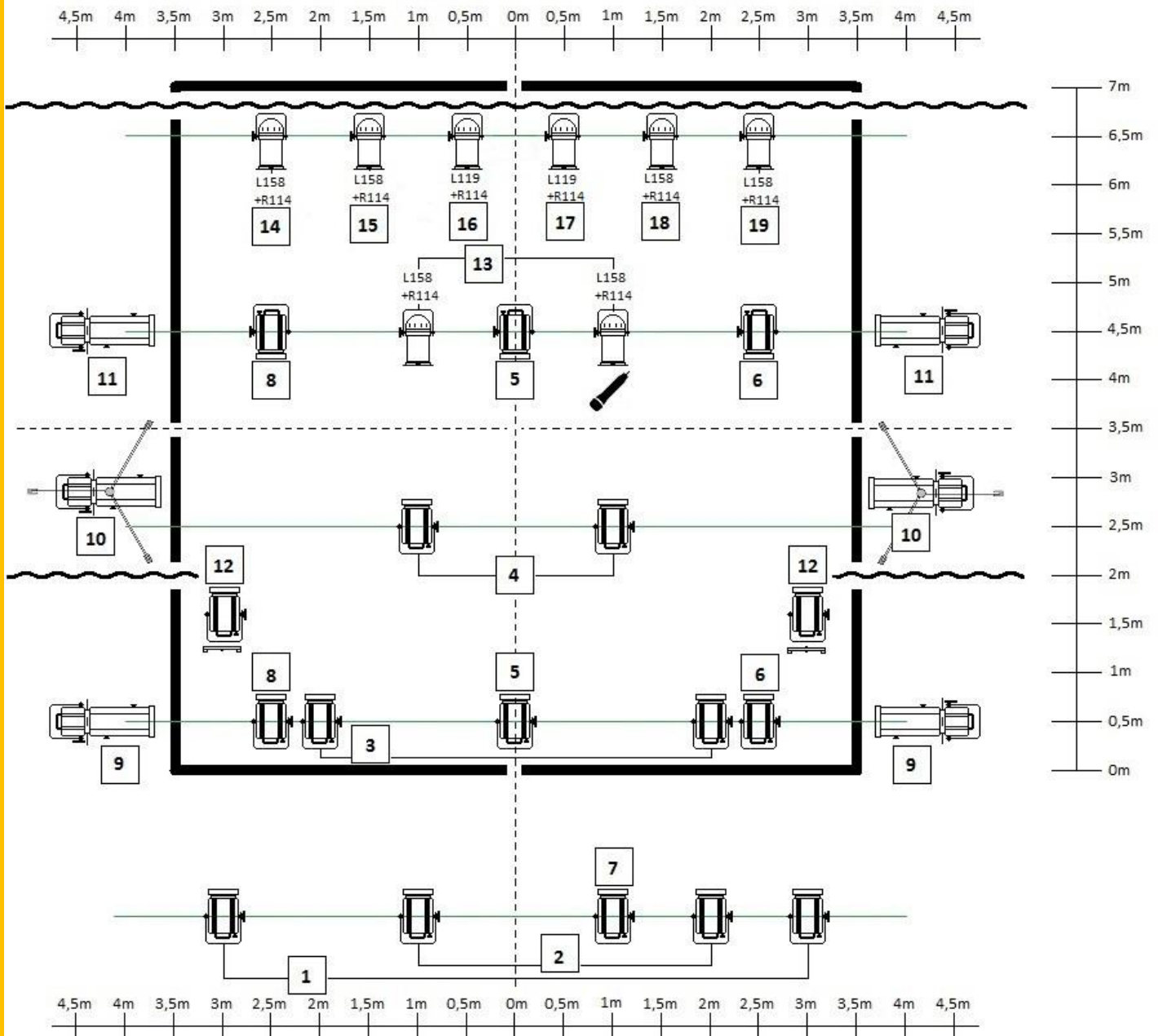


Contact: Marie Mellinger - [www.fredteppe.com](http://www.fredteppe.com) - [contact@fredteppe.com](mailto:contact@fredteppe.com) - 00 33 (0)6 75 21 95 08

**Contact:**

• Technics: Florent Chartier, general operator, lightning and sound director  
00 33 (0)6 70 45 35 87 - [florent.chartier@gmail.com](mailto:florent.chartier@gmail.com)

# Tuiles Fred Teppe





# "TUILES"

## Technical Datasheet Light

(Out door or spotlight)

### Set:

- Available volume: 4m x 4m x 2,5m
- Flat, smooth and hard floor, maximum slope: 1 %

### Sound:

- 1 CD player with an automatic pause
- 1 console with 2 inputs, 2 auxiliaries (post faders) and 1 stereo output
- 1 facade adapted to the hall
- 1 stereo system for a sound feedback at the front of the stage (left and right)
- 1 ambiance micro

### Dressing room:

- Individual, close to the stage, with: a table, a mirror, a lamp, two chairs, a towel and soap, and an iron.
- Shower and toilets (clean and functioning), drinkable water and snack for 1 person per performance.
- The room must be ready before the artist's arrival.

### Progress and team:

- Depending on the dwelling time, we can arrive on the morning of the performance day, or in the evening of the day before.
- Technical personnel for the day: one general operator of the place or one person to help mounting and dismounting.

### Schedule:

17 h 30 - 20 h 00: technical installation and run-through

20 h 30 - 21h 30: performance

21 h 30: 1 hour to dismount

These hours act as examples, and will change according to the time and place of the show.

